

IOWA



FAMILY CALENDAR
2024-2025

WELCOME TO THE UNIVERSITY OF IOWA!



Photography in this publication courtesy of Office of University Relations, Student Life Communications, and University of Iowa Strategic Communications.

ABOUT IOWA

The University of Iowa is a major national research university located on a 2,100-acre campus in Iowa City, Iowa. More than 31,000 students enroll at Iowa each year, 20% of which are minority students, and 18% first-generation students. International students from over 100 countries make up 5% of the University's enrollment.

Established in 1847, Iowa has earned international recognition for its wealth of achievements in the arts, sciences, and humanities. Iowa was the first U.S. public university to admit men and women on an equal basis and the first institution of higher education in the nation to accept creative work in theater, writing, music, and art as theses for advanced degrees. It established the first law school and the first educational radio station west of the Mississippi, broadcasted the world's first educational television programs, and has developed prominent educational testing.

ONLINE RESOURCES

University Homepage
uiowa.edu

A-Z Search
uiowa.edu/a-z

Division of Student Life
studentlife.uiowa.edu

Office of Campus Safety
safety.uiowa.edu

For further phone and web contact information, see pages 24-27 located at the back of the calendar.

IOWA LINGO

Become fluent in common University of Iowa terms:

Duo Login

The university uses Duo Security tools, including the Duo Mobile app, to manage the Two-Step Login process. You may hear the system referred to as either "Two-Step" or "Duo." Push notifications to the Duo Mobile app are the safest, fastest, and most reliable way to complete your logins

Hawk ID

A combination of letters (typically your student's first initial and last name) that is unique to each student, used for identification and access to online University systems

ICON

Iowa Courses Online: your student's online source for information and content for their courses

IMU

Iowa Memorial Union: the hub of student life and events, places to eat, Nurse Care, the Iowa Hawk Shop Bookstore, and many study spaces

Iowa One Card

Your student's official University ID card

LLC

Living-Learning Communities: small groups of students who live together in residence halls and share common interests and goals

MyUI

The online portal for University information and student records

Ped Mall

Pedestrian Mall: the hub of downtown Iowa City featuring specialty stores, dining, and entertainment options

Pentacrest

The center of campus featuring the Old Capitol building at its center

RA

Resident Assistant: each residence hall floor has an RA who assists students and helps run the floor

TA

Teaching Assistant: TAs are graduate students who assist professors in teaching courses

University ID

The multiple digit identification number listed on your student's Iowa One Card



Introducing THE UI PARENT AND FAMILY NETWORK

The UI Parent and Family Network helps keep you informed and connected to campus throughout your student's time at Iowa. It serves as the hub for university-family partnerships and the website functions as a gateway to resources across campus, including health and safety, financial aid, and more. The Parent and Family Network also hosts a variety of events and programming throughout the year. Be on the lookout for some exciting updates coming to the Parent and Family Network in Spring 2025.

UI Parent and Family Council

The Parent and Family Council provides opportunities for parents/guardians who want to be involved and make a positive impact on undergraduate student life at Iowa. Applications go live in May and will be accepted until August 1. For more information about participation, visit our website.

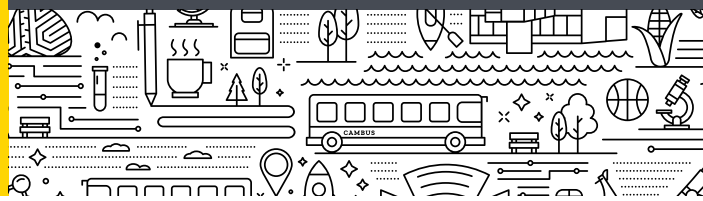
You can learn more about the UI Parent and Family Network and the UI Parent and Family Council at:

➔ [PARENTS.UIOWA.EDU](https://parents.uiowa.edu)

TABLE OF CONTENTS

This calendar has been curated to introduce important resources and provide suggested conversation topics at specific points of the academic year. You may need to utilize resources before the month they are shared. Below is a table of contents with information about the topics featured each month.

- August** Transitioning to Campus and On Iowa!
- September** Well-being and Roommate Conflicts
- October** Recreational Services and Financial Aid
- November** Advising and Academic Success
- December** Preparing for Winter Break
- January** Off-Campus Housing and Career Preparation
- February** Study Abroad
- March** Preparing for Spring Break
- April** Campus Safety
- May** Celebrating a Successful Year



WELCOME TO THE UNIVERSITY OF IOWA!

We are honored to have you as members of the Hawkeye family. Whether you are sending your first, middle, last, or only child to Iowa, you and your student are embarking on a journey that is sure to bring you discovery, as well as joy, and maybe a little stress. I am a parent of college students, so I truly know what you're experiencing. It's natural to have questions or concerns as your student comes to campus. Please reach out and encourage your student to reach out to all the support services that are here to help. I truly believe that Iowa is a special place – big enough for endless opportunities, but small enough that every student will have multiple caring faculty and staff members who know them.

The Division of Student Life will be one of your partners during your student's time at Iowa. We provide most everything outside the classroom that supports your student in succeeding. We are here to support the student experience holistically, and you can learn more about what we offer in the

following pages. We help students find places they belong, people who will be on their team, passions to explore within and beyond their major, and paths to success as a Hawkeye. Most importantly, our job is to believe in your student: in their talents, their contributions, their well-being, and their success.

The family calendar is designed specifically for you. It includes dates, deadlines, contact information, and tips that will help make your student's first year at Iowa as successful and fulfilling as possible. When my oldest, Evan, started in 2019, I found the calendar helpful, cueing me to check in with him on key dates, such as getting ready for registration, or supporting him as he made his way in his residence hall community.

My staff and I are here to serve all Hawkeye students and families, and we are thrilled you chose the University of Iowa. You made a great decision!

On Iowa!



Sarah Hansen
Sarah Hansen
Vice President for Student Life





ON IOWA!

The On Iowa! program is the official welcome for new students that runs Sunday-Sunday, August 18-25, 2024. Students will check in for On Iowa! at the Iowa Memorial Union and receive a personalized itinerary for the week. On Friday, new students are required to attend their Hawkeye Welcome small group session where they will meet other new students, explore resources and opportunities, and learn more about what it means to be a Hawkeye. New students will connect with their college and advising units, sample a university class, consider goals for the semester, and talk about what it means to engage in the Iowa campus community. Throughout the week, students will join other new students in a wide variety of programming to learn more about campus and have some fun! The weekend before classes begin, students will be invited to historic Kinnick Stadium to participate in University of Iowa traditions. On Iowa! closes on Sunday with Convocation, the Block I photo, and the President's Block Party.

ON IOWA! GO HAWKS!

→ [ONIOWA.UIOWA.EDU](https://oniowa.uiowa.edu)

New Students participating
in Convocation

AUGUST

Sunday	Monday	Tuesday	Wednesday	Thursday	Friday	Saturday
Did You Know? Students receive an email to their UIowa account at the beginning of each month. U-Bill payments are due on or around the 22nd of each month. For U-Bill dates, visit: registrar.uiowa.edu				01	02	03
04	05	06	07	08	09	10
11	12 Success at Iowa Opens	13	14	15	16	17 Residence Hall Move-In
18 Residence Hall Move-In	19 Residence Hall Move-In	20 Residence Hall Move-In	21	22	23	24 Returning Student Move-In
On Iowa! Aug. 18 - 25						
25	26 Classes Begin National Pan-Hellenic Council Orientation	27	28	29	30	31

MANAGING EXPECTATIONS AND TRANSITIONS

Transition Tips for Parents

- ➔ Be willing to listen to your student
- ➔ Help your student by empowering them to take the initiative to solve their own problems
- ➔ Familiarize yourself with the campus resources that may be helpful for your student
- ➔ Remember that your student is experiencing a lot in their college transition
- ➔ Avoid second-guessing your student or providing too much supervision
- ➔ Send care packages or letters and keep in touch

Questions to ask your student:

- ➔ What are you learning in the Success at Iowa course?
- ➔ What On Iowa! events are you planning to attend?

Success at Iowa opens on August 12

Success at Iowa is a required online course providing new students with information at each stage of their transition to help them reach their goals and get the most out of their experiences at the University of Iowa. This course opens on August 12 on Iowa Courses Online (ICON).

WELL-BEING AT IOWA

Health and Wellness Support

Student Health provides primary medical care for registered University of Iowa students—the same care you would receive from a health care provider in your hometown. A registered nurse can be reached by phone 24 hours per day. Office visits to Student Health are covered by a student's health fee. Students will be seen by board-certified physicians and nationally certified physician assistants who are dedicated to the field of college health care. They partner closely with University of Iowa Health Care for specialty care and services.

Additional services, such as labs, vaccinations, and certain types of procedures and examinations are billed to the student's insurance.

Student Health has two locations—in Westlawn and the Iowa Memorial Union Nursecare Clinic.

→ [STUDENTHEALTH.UIOWA.EDU](https://studenthealth.uiowa.edu)

University Counseling Service (UCS) offers students a full range of culturally informed counseling and mental health services including group, individual, and couples counseling. UCS assists students in maintaining a mentally healthy life and works with students with mental health concerns when they negatively impact their sense of wellness and academic and personal lives.

All UCS counseling services are free and confidential.

UCS has locations at Westlawn, Catlett Residence Hall, the College of Dentistry, the College of Law, Tippie College of Business, and the University College (serving IVETS and military-connected individuals and families).

→ [MENTALHEALTH.UIOWA.EDU](https://mentalhealth.uiowa.edu)

Student Wellness offers health promotion services aimed to help students develop healthy lifestyles now and for their futures. With a diverse staff including certified health educators, a dietitian, a fitness specialist, and substance abuse counselors, students can take advantage of free one-on-one consultations for nutrition, fitness, stress management, sleep and use of alcohol, tobacco and other drugs.

Student Wellness also offers educational workshops to groups, online screening and incentive programs, and health events across campus. Student Wellness has two locations – in Westlawn and the Campus Recreation and Wellness Center.

→ [STUDENTWELLNESS.UIOWA.EDU](https://studentwellness.uiowa.edu)



Students walking on the Pentacrest.

SEPTEMBER

Sunday	Monday	Tuesday	Wednesday	Thursday	Friday	Saturday
01	02 University Holiday, Offices Closed	03	04 Student Engagement Fair	05	06	07
08	09	10	11	12	Family Weekend Sept. 13-15	
15 Multicultural Greek Council Orientation	16 Study Abroad Fair	17	IFC Formal Recruitment Sept. 18-24			
PHC Primary Recruitment Sept. 15-29						
22 IFC Formal Recruitment Sept. 18-24	23	24	25 Fall Career Fair	26	27	28
PHC Primary Recruitment Sept. 15-29						
29	30	Did You Know? Getting involved matters. Students who participate in campus life are more likely to be successful. Programs can help students develop lifelong leadership skills, offer incredible experiential service-learning, and provide civic engagement opportunities to students both on and off-campus. To learn more about student engagement, including Fraternity and Sorority Life, visit: leadandengage.uiowa.edu				

ROOMMATE CONFLICTS AND RESOURCES FROM THE OFFICE OF RESIDENCE EDUCATION

The Residence Education Staff assists students with their transition to college and makes every effort to enhance their residence hall living experience. Through the Residence Education Model, your student will be introduced to a variety of campus and community resources, and participate in many learning experiences tailored to what community your student chose to live in, such as New Student Experience, a Living Learning Community, or Honors.

While the process of living with someone can be stressful for even the most easygoing student, the overwhelming majority of roommates live together well and form positive relationships. A common concern of students living in the residence halls is: "Will I get along with my roommate?"

Here are some tips for you to share with your student in order to make their roommate experience a positive one:

- ➔ Communication is key!
- ➔ Be open to new perspectives and ideas.
- ➔ You have a Resident Assistant for a reason; talk to them!
- ➔ Consider what you need for the room to be cohesive and then advocate for yourself when talking with your roommate, however, also consider compromising to allow both you and your roommate(s) to have a great experience.

All students are required to complete a roommate agreement with their RA during the first few weeks of the semester. For more information, go to housing.uiowa.edu/roommates

HAWKEYE ATHLETICS AND STUDENT RECREATION

As a member of the Big Ten Athletic Conference, Iowa is home to 20 intercollegiate varsity teams. Hawkeye spirit is contagious when you join more than 70,000 screaming fans at Kinnick Stadium on a football Saturday or sit in the 15,500-seat Carver-Hawkeye Arena to cheer on the Hawkeye men's and women's basketball, gymnastics, or wrestling.

For information on purchasing student and parent tickets for athletic events, visit

→ [HAWKEYESPORTS.COM](https://hawkeyesports.com)

Recreational Services is your destination for recreation – with a mission to provide diverse recreational experiences that encourage active lifestyles. Recreational Services strives to accomplish this mission every single day at four facilities on campus, including the award-winning Campus Recreation and Wellness Center. Quality recreational opportunities and experiences are offered to the University of Iowa community, and the facilities provide healthy, respectful, and safe environments to ensure a positive atmosphere for all. Whether your student is interested in fitness, intramural sports, sport clubs, or the outdoors, Recreational Services is guaranteed to be an important and fun part of their adventure at the University of Iowa.

For more information, visit:

→ [RECSERV.UIOWA.EDU](https://recserv.uiowa.edu)



Student rock wall climbing at the Campus Recreation and Wellness Center

OCTOBER

Sunday	Monday	Tuesday	Wednesday	Thursday	Friday	Saturday
		01	02	03	04	05
06	07	08	09	10 Fall Engineering Career Fair	11	12
13	14	15	16	17	18	19
20	21	22	23	24	25	26
Homecoming Week Oct. 20-26						
27	28	29	30	31		

FINANCIAL MATTERS

Students can apply for financial aid by using the Free Application for Federal Student Aid (FAFSA) at studentaid.gov

To apply for need-based aid programs for the 2025-2026 school year, make sure your student submits the FAFSA as soon as possible after it becomes available. Some financial aid is offered on a first-come, first-served basis.

Questions to ask your student:

- ➔ What is your favorite part of being in college so far?
- ➔ How are you preparing for midterms?
- ➔ How have you been able to get involved on campus?

Many students are able to help finance their education through income earned from a part-time job. The University of Iowa offers a variety of part-time jobs on campus. In addition, jobs are available off-campus in the Iowa City/Coralville community. Here is information to aid your student in finding a part-time job:

careers.uiowa.edu/jobs/student-employment

“The Office of Student Financial Aid staff works to promote financial literacy through education and resources so that students have the information necessary to make informed borrowing and financial decisions. Staff are accessible by phone, email, drop-in, Zoom, and scheduled one-on-one appointments.”

BRENDA BUZYNSKI

Assistant Provost and
Director of Student
Financial Aid





REGISTRATION FOR SPRING CLASSES

Academic advisors work with students to provide transition support, course planning, and academic resources. To register for spring classes, students must meet with, and have their schedule approved by, their academic advisor before their registration date. Registration will be impeded if students have:

- An overdue U-Bill
- Not submitted proof of their measles, mumps, and rubella immunization to Student Health
- Not submitted their final academic transcripts to the Office of Admissions

NOVEMBER

Sunday	Monday	Tuesday	Wednesday	Thursday	Friday	Saturday
Early Registration All current students register for the next semester during "Early Registration". Early Registration runs from November 11 – December 6 .					01	02
03	04	05	06	07	08	09
10	11	12	13	14	15	16
17	18 Last day to withdraw entire registration Last day to drop a semester-length course	19	20	21	22 University Dining contract ends	23
24	25	26	27	28 University Holiday, Offices Closed	29 University Holiday, Offices Closed	30
Fall Break Nov. 23 - Dec. 1						

ACADEMIC SUCCESS

By November, students will have settled into their academic routine, taken midterm exams, and completed challenging academic work. If they aren't happy with their progress, it's not too late to try new academic strategies and resources. University instructors hold office hours as an opportunity for students to ask questions about course material and assignments. The University also offers a variety of academic assistance, including tutoring, supplemental instruction, help labs, and many library services. Details are at tutor.uiowa.edu.

During November, students will also continue their conversation with their academic advisor about their plan of study and the resources available to help them succeed. They should expect to discuss their final course choices for spring at their registration appointment in November or early December. Most first year students are advised in the Academic Advising Center (AAC); students who were admitted directly to the College of Business, Education, Engineering, Public Health, Nursing, or Pharmacy have an advisor within their college. Academic Advising Center information can be found at advisingcenter.uiowa.edu.

Questions to ask your student:

- ➔ Have you utilized academic resources such as supplemental instruction, Tutor Iowa, or office hours?
- ➔ How have your interests changed this semester?
- ➔ What classes are you taking in the spring semester?

Did You Know?

Tutor Iowa is a virtual centralized location for academic resources offered to undergraduate students. Support options include help centers, Supplemental Instruction (SI) offerings, private tutors for hire, and academic success worksheets and videos! To learn more about academic support options, visit: tutor.uiowa.edu





HAVE A GOOD BREAK

Winter break is an important time in the evolving relationship between you and your student. This is likely the first time that they will be home with you for an extended period of time since starting at Iowa. Remember that it is important for them to have their independence, but they may still need you for many things. **Communication is key!** Discuss rules for their stay at home. While it is important for you to respect their individuality, your student still needs to know that there are rules and courtesies to be observed. Honest inquiries and open conversations about your student's experiences form the basis of a positive relationship between you and your student.

Students walking on campus during Winter

DECEMBER

Sunday	Monday	Tuesday	Wednesday	Thursday	Friday	Saturday
01	02	03	04	05	06	07
08	09	10	11	12	13	14
15	16	17	18	19	20	21
22	23	24	25	26	27	28
29	30	31				

University Dining contract resumes

Last day of classes

University Dining contract ends

Finals Week
 Dec. 16 - 20

Residence Halls closed for Winter Break at noon

University Holiday, Offices Closed

University Holiday, Offices Closed

Questions to ask your student:

- ➔ How is studying for finals going?
- ➔ How are you taking care of yourself?

OFFICE OF ACCESS AND SUPPORT

The Office of Access and Support (OAS) provides an affirming space and opportunities that foster student success, eliminate equity gaps, and create a sense of belonging for all students. OAS strives to be the campus leader for the access and success of students, especially those from under-resourced school districts and communities. Through individual student support and passionate collaboration, OAS supports University of Iowa students' educational experience by fostering an environment for them to actualize their goals, find community, and become well-equipped global citizens. The OAS provides academic coaching, holistic support, and student engagement opportunities that promote student success, enrich the student experience, and are designed to increase the retention and graduation rates of students at the University of Iowa.

LUIS ARANDA
 Interim Director,
 Office of Access and Support



OFF-CAMPUS HOUSING

If your student is considering living off-campus, there are several offices and resources available to assist you and your student in this process. Many students are in the process of signing a lease for fall 2025 before or by January. The Off-Campus Housing website is a great place to start. There, you can find apartments, houses, condos, and rooms for rent in Iowa City and the surrounding areas. This site also provides helpful information for understanding leases and being a responsible renter. Review resources for living off campus at:

→ [OFFCAMPUSHOUSING.UIOWA.EDU](https://offcampushousing.uiowa.edu)



Students walking on the Ped Mall downtown

JANUARY

Sunday	Monday	Tuesday	Wednesday	Thursday	Friday	Saturday
Did You Know? The Pomerantz Career Center offers numerous resources for your student, including interview skills, resume writing, and connections to internship, job, and volunteer opportunities. Visit careers.uiowa.edu for more information.			01 University Holiday, Offices Closed	02	03	04
05	06	07	08	09	10	11
12	13	14	15	16	17	18 Residence Halls open University Dining contract resumes
19 University Holiday, Offices Closed	20 Classes begin	21	22	23	24	25
MLK Jr. Human Rights Week Jan. 20 - 24						
26	27	28	29	30	31	

CAREER PREPARATION

One of the most important facets of your student's journey is the need to start preparing for their future career.

The Pomerantz Career Center assists students with career exploration and professional development. How can you help your student meet their career goals?

- ➔ Encourage an appointment with a Career Coach who will be knowledgeable about various career fields, industries, companies, and occupations.
- ➔ If your student is an open major, recommend taking a career assessment.
- ➔ Suggest joining a student organization or volunteering in the community so your student can gain new skills and build their résumé. Plus, employers like to see campus and community involvement!

For more information, visit: careers.uiowa.edu

“We are eager to assist students as they begin contemplating, “What work environments and job duties interest me?” and “What experiences do I need to develop my skill set?”. Our career communities allow for a tailored approach for advising students based on their career interests. We encourage students to visit us early and often to discuss plans and next steps!”

ALICIA JOENS

Career Coach,
Pomerantz Career Center



A row of international flags hanging in a ballroom. The flags are of various colors and designs, including the United States flag, the French flag, and the Japanese flag. They are arranged in a line, with some overlapping. The background is a warm, golden-brown color, likely the wall of the ballroom.

STUDY ABROAD

The opportunity to study abroad and encounter another culture directly is one of the richest educational experiences available. The University of Iowa encourages your student to study or intern abroad and sponsors more than 200 programs in the Americas, Europe, Asia, Africa, and Oceania.

Whether studying or interning abroad, students develop decision-making, problem-solving, intercultural communication, and other marketable skills which give them an advantage in the global economy after graduation.

While abroad your student will stay on track for graduation by satisfying requirements for their major, minor, certificate, and/or the General Education: CLAS Core. Our records show that students have a higher probability of graduating in four years if they participate in an international experience during their time at UI.

The cost of study abroad programs is dependent on several factors, including the program structure, program length, and local cost of living, as well as whether a student pays in-state or out-of-state tuition. In most cases, institutional aid and federal financial aid can be used toward study abroad, making study abroad affordable for all students. In addition, the UI Study Abroad office awards approximately \$500,000 a year in scholarships and grants.

International opportunities are available throughout the year. UI offers programs in the summer, winter, fall and spring semester, and for the academic year. Where, when, and how long your student studies abroad depends on their academic, professional, and personal goals.

Encourage your student to attend a Discover Study Abroad information session to learn how study abroad works and to find the right international opportunity for them. It is never too early to start planning.

Study Abroad

International Programs
1111 University Capitol Centre
319-335-0353

→ INTERNATIONAL.UIOWA.EDU/STUDY-ABROAD

FEBRUARY

Sunday	Monday	Tuesday	Wednesday	Thursday	Friday	Saturday
						01
02	03	04	05	06	07	08
09	10	11	12	13	14	15
16	17	18	19	20 Spring Engineering Career Fair	21	22
23	24	25	26	27 Spring Career Fair	28	

PARKING AND TRANSPORTATION

The University of Iowa has multiple resources to help your student get around campus – including public transit, bicycling, and parking. The most notable of these is the UI CAMBUS system. CAMBUS is a fixed-route bus system providing service to the entire campus. Bus stops are located conveniently and provide frequent service to the residence halls. CAMBUS rides are free and available to everyone. The Bionic Bus, operated by CAMBUS, is a specialized service for persons with disabilities.

Riders can download the mobile app Transit to track bus locations in real-time, see departure predictions, and receive guided navigation. To receive service alerts like detours, riders should favorite the routes they ride. The university also offers students subsidized bus passes for city transit services.

Miles of sidewalks and pedestrian paths and bridges provide scenic routes to travel around campus. The university and the surrounding communities also offer many bicycle amenities including repair stations, dedicated bike lanes, and trail systems. We also offer a free bicycle registration through Bike Index that can help identify a bicycle if it is lost or stolen.

For trips home during break periods, a ride-matching service called UI Rideshare is also offered to help students connect with other students traveling the same direction.

Parking on campus is limited and provided by a mix of hourly and permit parking. In general, it is recommended students do not bring a vehicle to campus. Students who bring motorcycles or mopeds to campus must obtain a permit to park in motorcycle parking

lots throughout campus. Students are required by the Board of Regents to register any motor vehicle they bring to campus. Registering a vehicle is completed easily online through the Parking Portal at parking.uiowa.edu.



More information about all Parking and Transportation services can be found at: transportation.uiowa.edu.

ALCOHOL AT IOWA

High-risk alcohol use is a concern on campuses across the country. At Iowa, this issue is addressed through a variety of harm reduction strategies, including protective environmental approaches, the Collegiate Recovery Program and education, prevention and early intervention strategies. Through these efforts, Iowa students are drinking less and experiencing fewer harms than ever before, but we still have work to do. Families play a vital role – our online parent handbook shared provides research-proven guidelines for conversations to help keep your student safe and healthy at college.

→ [MENTALHEALTH.UIOWA.EDU/COLLEGIATE-RECOVERY-PROGRAM](https://mentalhealth.uiowa.edu/collegiate-recovery-program)



Iowa City at night

MARCH

Sunday	Monday	Tuesday	Wednesday	Thursday	Friday	Saturday
Questions to ask your student: → How are your classes going? → How are you managing your time during midterms?						01
02	03	04	05	06	07	08
09	10	11	12	13	14	15
16	17	18	19	20	21	22
Spring Break <i>March 15 - 23</i>						
23	24	25	26	27	28	29
30	31					

“We know students may experience challenges during their college career that impact their ability to fully participate academically and socially on campus. The Dean of Students team coordinates efforts with our campus partners to assist students in overcoming these challenges to get back on track to achieve success at Iowa.”

ANGIE REAMS, PHD
 Associate Vice President
 and Dean of Students



TALK TO YOUR STUDENT BEFORE SPRING BREAK

While your student navigates their journey at the University of Iowa, it is vital that you talk with them about their academics and co-curricular activities so that they may make the most of their educational experiences. It is important that your student is given the knowledge and tools necessary to make informed decisions. For example, the week prior to spring break is the perfect time to speak with your students about alcohol and drugs.



Old Capitol Building at night

SAFETY ON CAMPUS

Campus Safety is committed to creating a safe and welcoming community for all students, faculty, staff, and visitors. The organization includes eight departments that are committed to all facets of campus safety, including the UI Police Department, Security Services, Emergency Management, the Threat Assessment Team, Security Engineering Services, Clery Compliance, Emergency Communications, and Fire Safety. Safety services are available 24-hours a day and are provided by trained and experienced professionals whose goal is to educate the university community on personal safety and crime prevention, which they achieve through educational programs, community outreach, safety planning, and follow-up support.

→ [SAFETY.UIOWA.EDU](https://safety.uiowa.edu)

Student safety resources include:

- **Rave Guardian** is a free mobile app that allows users to set a safety timer for their walk home, call Campus Safety with the touch of a button, and text anonymous tips to UI Police. For access to the campus network, students should sign up using their UI email address.
- **Nite Ride** is a free late-night transportation service available to UI students, faculty, and staff. Request a ride between 10 p.m. and 5 a.m. 7 days a week, or an express ride directly to your destination for \$1.
- **Hawk Alert** is one layer of the campus emergency notification system. Hawk Alerts are used to notify campus when there is an immediate threat to the health or safety of the campus community. Text message is the fastest way to receive an alert, and settings can be updated on MyUI.
- **Safety Training** Campus Safety offers a variety of free and low-cost personal safety training courses, including but not limited to CPR, personal safety and self-protection, Rape Aggression Defense (R.A.D.), and Civilian Response to Active Shooter Events (CRASE).
- **Student Care Coordinators** Campus Safety has partnered with the Division of Student Life to support a care coordinator position that provides follow-up support services for students who have had law enforcement contact, crisis intervention, or hospitalization.

APRIL

Sunday	Monday	Tuesday	Wednesday	Thursday	Friday	Saturday
		01	02	03	04	05
06	07	08	09	10	11	12
13	14	15	16	17	18	19
20	21 Last day to withdraw entire registration Last day to drop a semester-length course	22	23	24	25	26
27	28	29	30	Questions to ask your student: <ul style="list-style-type: none"> ➔ What is the plan for summer? Coming home? Internship? Summer classes? ➔ What classes are you taking next semester? 		

WELL-BEING AND BASIC NEEDS

Food Insecurity

The **Food Pantry at Iowa** provides free nutritious food and necessities for University of Iowa students, postdocs, faculty, and staff. Conveniently located in the lower level of the Iowa Memorial Union, the Food Pantry at Iowa offers a variety of food and other supplies. Hours are listed on their website.

basicneeds.uiowa.edu/food-pantry

Hawkeye Meal Share allows students with meal plans to donate their unused guest meal swipes to fellow students struggling with financial resources. Students in need of meals can access the application and learn more about the program and on the website.

dos.uiowa.edu/assistance/meal-share

Financial and Other Support

The **Student Life Emergency Fund** provides financial assistance to students experiencing an emergency or unforeseen circumstances that negatively and severely impacts their academic success.

dos.uiowa.edu/assistance/student-support-initiatives

The **Clothing Closet** provides students with access to quality, free, new or used, professional clothing and is located on the ground floor of the Iowa Memorial Union, adjacent to the Food Pantry at Iowa.

basicneeds.uiowa.edu/clothing-closet



MOVING OUT

Time flies when you're having fun, your student has completed their first academic year at the University of Iowa!

If your student is living in the residence halls, University Housing and Dining requires them to officially check-out of the residence halls within 24 hours after their last final exam. The room check-out process includes turning in all keys that have been checked out to the student and providing a summer address for mail forwarding. Each RA will have a final floor meeting to discuss exactly what students must do to properly check-out of the residence halls. To speed up the process, bring your own moving supplies. Empty boxes, packing tape, cleaning supplies, and a dolly will keep you moving right along!

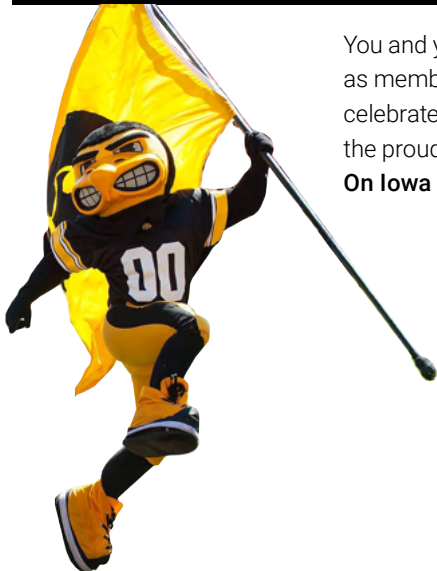


Graduation Herky on
the Pentacrest

MAY

Sunday	Monday	Tuesday	Wednesday	Thursday	Friday	Saturday
Congratulations... You've made it through your first year as a proud member of the Hawkeye family!				01	02	03
04	05	06	07	08	09	10
					Last day of classes	
11	12	13	14	15	16	17
	Finals Week May 12 - 16					University Housing contract ends at noon
18	19	20	21	22	23	24
25	26	27	28	29	30	31
University Holiday Offices Closed						

CELEBRATING A SUCCESSFUL YEAR



You and your student have completed your first year as members of the Hawkeye family. Take time to celebrate, show your Hawkeye spirit, and continue the proud tradition of the University of Iowa.

On Iowa and Go Hawks!

*The word is "Fight! Fight! Fight! for IOWA,"
Let every loyal Iowan sing;*

*The word is "Fight! Fight! Fight! for IOWA,"
Until the walls and rafters ring (Go Hawks!)*

Come on and cheer, cheer, cheer, for IOWA

Come on and cheer until you hear the final gun.

*The word is "Fight! Fight! Fight! for IOWA,"
Until the game is won.*

Written by Meredith Willson

Questions to ask your student:

- ➔ Finals are right around the corner, what are you doing to prepare?
- ➔ What is the plan for move-out?

Herky the Hawkeye, Iowa's official mascot, was created in 1948 as the symbol of Hawkeye athletics. Drawing his name as a shortened version of the Greek strong-man Hercules, Herky's first mascot appearance occurred in 1959 at a football game. Today, he remains a staple of Iowa Hawkeye pride.

ACADEMICS

Earning a Degree at Iowa

Your student will be working toward a degree consisting of three components – general education coursework, major coursework, and elective coursework. General education coursework is designed to provide your student with the skills needed for a lifetime of learning and for a first career. Your student will learn how to pose questions, find answers, evaluate attitudes and beliefs, and adapt to change by taking these courses. Major coursework exposes students to the academic field of their choice, focusing on in-depth study of complex problems, issues, and ideas. Work in the major encourages students to form academic ties with both instructors and peers while acquiring in-depth knowledge. Elective coursework rounds out a student's degree program. Each of these three required components allows significant choice for students, encouraging them to follow their passions and interests.

Minors and Certificate Programs

Students who seek additional opportunities may choose to complete a minor or certificate as well as their bachelor's degree program. Students can earn a minor or certificate in any area that offers one, even in another college within the University.

Semester Hours

A semester hour (s.h.) is a unit of measurement. Each course is worth a certain number of semester hours of credit. This number is based on hours spent in class and the two hours of homework that is expected for each class meeting. Semester hours for each course are added to determine a student's classification:

- First-Year:** 0-29 s.h. earned
- Sophomore:** 30-59 s.h. earned
- Junior:** 60-89 s.h. earned
- Senior:** 90 + s.h. earned

Degree Audit

Each student has an individual degree audit, located in MyUI (MyUI.uiowa.edu). The degree audit helps your student to monitor progress toward graduation by comparing the coursework completed, to the courses required for their degree. The degree audit also tracks a student's GPA.

Academic Contacts and Resources

Academic Advising Center

319-353-5700 • advisingcenter.uiowa.edu

Main Library

319-335-5299 • lib.uiowa.edu

Mathematics Tutorial Laboratory

319-335-0810 • math.uiowa.edu

TRIO Student Support Services

319-335-1288 • diversity.uiowa.edu/trio-sss

Tutor Iowa

319-467-1561 • tutor.uiowa.edu

University of Iowa Honors Program

319-355-1681 • honors.uiowa.edu

Writing Center

319-335-0188 • writingcenter.uiowa.edu

Academic Policies

You can find information regarding each of the following topics on the website of the Office of the Registrar (registrar.uiowa.edu).

- Academic policies of specific undergraduate colleges (links are in the MyUI Student Handbook)
- Graduation information
- Policy on human rights
- Policy governing undergraduate and professional students enrolled in courses outside their own college or degree program
- Registration information
- Release of student records
- Significant deadlines
- Statements on diversity and religious diversity
- Student complaints concerning faculty actions
- Tuition information: tuition assessment, resident classification for tuition purposes
- University terminology

Grade Reports

Grades are reported on MyUI about a week after the end of exam week. Students are able to view grades at MyUI.uiowa.edu.

Final Examinations

Dates and times of all final examinations are announced around the fifth week of classes. Your student will receive this exam schedule from the Registrar through email at their uiowa.edu address. Your student should consult this schedule before making any travel plans. Students are not excused from exams for family holiday plans or events.

Remind your student to check their uiowa.edu email address frequently for important news and reminders.

Academic Recognition

University of Iowa Honors Program

Students can apply to join the Honors Program as either entering or current students. Honors students engage with a

community of peers, staff, and faculty through an array of honors classes and experiential options including research, study abroad, and internships. Honors-only classes feature an enriched classroom environment and hands-on experiences with honors peers. Honors builds community through programming and supports students with scholarship opportunities and skill-building resources. Optional honors housing enables members to connect across colleges and majors. The University Honors curriculum encourages engagement in high impact practices, supported by access to faculty, professional staff, and peer mentors. Achievement is recognized at graduation with University Honors designated on transcript and diploma.

Dean's and President's Lists

The Dean's List recognizes undergraduate students who achieve a GPA of 3.50 or above on 12 s.h. or more of graded work and who have no hours of I (incomplete) or O (no report) for that semester.

The President's List recognizes undergraduates who achieve a GPA of 4.00 for 12 s.h. or more of graded work and who have no hours of I (incomplete) or O (no report) for two consecutive semesters (excluding summer sessions).

Changes in Registration — Adding or Dropping a Course

Students can make most registration changes in MyUI including drops and adds. Please visit the Office of the Registrar website for the most current registration information: registrar.uiowa.edu and click on the Registration tab. If your change is not allowed in MyUI you may use the email option. Details are listed at: registrar.uiowa.edu/email-option-make-change-registration. All changes can be made in MyUI. If you have any questions, please contact the UI Service Center for information on how to process the change you need. UI Service Center: 2700 UCC, registrar@uiowa.edu or 319-384-4300.

FINANCIAL

University Bill (U-Bill)

Student U-Bills are created on the first business day of each month and are available online through MyUI. The first bill for the fall semester will be ready in August and the first bill for the spring semester will be ready in January. Students receive an email to their UIowa email account at the beginning of each month, notifying them that their U-Bill is available to review online. Students may choose to invite a guest or parent to have access to their student information. This allows guests and parents to view and pay the U-Bill each month.

Payment for the U-Bill is due on or around the 22nd of each month. There are two payment options:

- **Payment of Total Balance Due**
- **Deferred Payment Plan:**
Tuition and contracted Housing and Dining charges can be deferred and paid over the first three months of fall and spring semesters. By paying the minimum payment due listed on the monthly U-Bill, students are automatically enrolled in the Deferred Payment Plan. Students that choose to take advantage of the Deferred Payment Plan will be charged a fee each semester. For more information on the Deferred Payment Plan and Deferred Payment Fee please visit the University Billing website at: ubill.fo.uiowa.edu/service-charges

If a payment of at least the minimum payment due is not received by the monthly due date, the account may be charged a late payment fee. For more information on the Late Payment Fee please visit the University Billing website at: ubill.fo.uiowa.edu/payment-options

U-Bill payment methods include:

- **Online** - through MyUI using a checking or savings account
- **Mail** - checks can be mailed to the payment processing center, using the address listed on the U-Bill payment stub
- **Credit Card** - a non-refundable service fee is assessed for all credit and debit card transactions. For more information on credit card service fees please visit the University Billing website at: ubill.fo.uiowa.edu/can-my-university-bill-be-paid-credit-card

Tuition and fees information can be found at: registrar.uiowa.edu

University Records and Documents Fee

All new students enrolled at the University of Iowa will be assessed a single "University Records and Documents Fee". The non-refundable fee combines existing fees into one package to facilitate assessment, student service, and satisfaction.

For more information please see the registrar's website at: registrar.uiowa.edu/university-records-and-documents-fee

Financial Contacts and Resources

University Billing Office
319-335-0071 or 800-943-4557
ubill.fo.uiowa.edu

Office of Student Financial Aid
319-335-1450
financialaid.uiowa.edu

Colleges at the University of Iowa

Carver College of Medicine
451 Newton Road
319-335-6707 • medicine.uiowa.edu

College of Dentistry
801 Newton Road
319-335-7499 • dentistry.uiowa.edu

College of Education
N459 Lindquist Center
319-335-5359 • education.uiowa.edu

College of Engineering
3100 Seamans Center for the Engineering Arts and Sciences
319-335-5764 • engineering.uiowa.edu

College of Law
280 Boyd Law Building
319-335-9034 • law.uiowa.edu

College of Liberal Arts and Sciences
120 Schaeffer Hall
319-335-2633 • clas.uiowa.edu

College of Nursing
101 Nursing Building
319-335-7018 • nursing.uiowa.edu

College of Pharmacy
180 S. Grand Ave.
319-335-8795 • pharmacy.uiowa.edu

College of Public Health
100 College of Public Health Building
319-384-1500 • public-health.uiowa.edu

Graduate College
205 Gilmore Hall
319-335-2144 • grad.uiowa.edu

Tippie College of Business
C140 Pappajohn Business Building
319-335-1037 • tippie.uiowa.edu

University College
310 Calvin Hall
319-335-1497 • uc.uiowa.edu

STUDENT LIFE

Student ID Card

The Iowa One Card is the university's official photo identification card and is necessary for gaining access to facilities and services across campus. For questions, please visit idcard.uiowa.edu or email idcard@uiowa.edu.

Technology Services for Students

Get Started with Technology Guide

The Get Started Guide provides a handy checklist for students to get set up with technology. Some of the topics include:

- **Buying a new computer:** All students are eligible for education discounts on personal computer purchases.
- **Software:** UI students have access to many software titles, including the ability to install Microsoft Office on up to five computers for free.
- **Internet access on campus:** Wireless connectivity on campus (called eduroam) is available in all buildings, residence halls, and many public spaces. Students living in dorms receive wired Internet access (called ResNet). An Ethernet cable is required.
- **Computer labs and printers:** Students have access to many computers and printers on campus in labs called Instructional Technology Centers (ITCs).
- **Office 365:** Microsoft Office 365 is the UI's email system (50GB storage). It also provides access to file storage, Microsoft Office Online, and much more.

Visit the Get Started with Technology Guide at: its.uiowa.edu/techstart

Students with technology questions should contact the Help Desk by phone at 319-384-HELP (4357), by email at its-helpdesk@uiowa.edu, or visit our website at its.uiowa.edu.

Student Care and Assistance - Dean of Students

Student Care and Assistance provides assistance to students experiencing crisis and emergency situations. Student Care helps students with:

- Hospitalizations
- Medical emergencies or illness
- Mental health concerns
- Death of a family member
- Natural disasters – Fire, Displacement, Tornado, etc.

If a situation arises or you have questions, concerns, or need more information, please contact the DOS office by phone at **319-335-1162**, by email at dos-assistance@uiowa.edu, or visit dos.uiowa.edu/assistance.

Additional Contacts and Resources

Academic Resource Center (ARC)

tutor.uiowa.edu/arc-academic-resource-center

Academic Support and Retention (ASR)

319-467-1561 • asr.uiowa.edu

Afro-American Cultural Center (Afro House)

319-335-8296

multicultural.uiowa.edu/culturalcenters/afrohouse

Asian Pacific American Cultural Center (APACC)

319-335-2719

multicultural.uiowa.edu/culturalcenters/apacc

Athletic Ticket Office

1-800-424-2957 • hawkeyesports.com

Benefits Office/Student Health Insurance

319-335-2676 • hr.uiowa.edu/benefits

Clothing Closet

basicneeds.uiowa.edu/clothing-closet

Daily Iowan

319-335-6030 • dailyiowan.com

Dental Clinics

319-335-7499 • dentistry.uiowa.edu

Family Services

319-335-3558 • hr.uiowa.edu/family-services

Food Pantry

basicneeds.uiowa.edu/food-pantry

Fraternity and Sorority Life (FSL)

319-335-3059 • fsl.uiowa.edu

Hancher

319-335-1160 or 800-HANCHER (462-2437)

hancher.uiowa.edu

International Programs (Study Abroad)

319-335-2700 • international.uiowa.edu/study-abroad

International Student Support and Engagement (ISSE)

multicultural.uiowa.edu/culturalcenters/international-student-support-and-engagement

Iowa Memorial Union (IMU)

319-353-4468 • imu.uiowa.edu

Information Technology Services (ITS) Help Desk

319-384-HELP (4357) • its.uiowa.edu/helpdesk

Latino Native American Cultural Center (LNACC)

319-335-8298

multicultural.uiowa.edu/culturalcenters/lnacc

Leadership and Engagement

319-335-3059 • getinvolved.uiowa.edu

Office of Access and Support (OAS)

319-335-3555 • diversity.uiowa.edu/division-access-opportunity-and-diversity/office-access-and-support-oas

Office of the Dean of Students (DOS)

319-335-1162 • dos.uiowa.edu

STUDENT SAFETY

Rights and Privileges

As a member of the University of Iowa community, students can enjoy certain rights and privileges. Among these are the right to be free from discrimination and sexual harassment, the right to discuss and exchange ideas, the right to be involved in University governance, and the right to privacy. The University is guided by a single principle that is reaffirmed in our publications:

The University of Iowa prohibits discrimination in employment, educational programs, and activities on the basis of race, creed, color, religion, national origin, age, sex, pregnancy, disability, genetic information, status as a U.S. veteran, service in the U.S. military, sexual orientation, gender identity, associational preferences, or any other classification that deprives the person of consideration as an individual. The university also affirms its commitment to providing equal opportunities and equal access to university facilities. For additional information on nondiscrimination policies, contact the Director, The Office of Civil Rights Compliance, the University of Iowa, 202 Jessup Hall, Iowa City, IA 52242-1316, 319-335-0705, oie-ui@uiowa.edu.

UI Policies and Regulations

UI Policies and Regulations Affecting Students is an important resource that outlines the rights and responsibilities granted to every student in the University community. These policies are posted at dos.uiowa.edu/policies. At the start of the semester, your student will receive an email notice about the policies.

Safety Contacts and Resources

Cambus

319-335-8633 • transportation.uiowa.edu/cambus

Office of Campus Safety

319-335-5022 • safety.uiowa.edu

NiteRide

319-384-1111 • niteride.its.uiowa.edu/request

Rape Victim Advocacy Program (RVAP)

319-335-6001 (business) or

319-335-6000 (24 hour crisis line)

rvap.uiowa.edu

The Office of Civil Rights Compliance (OCRC)

319-335-0705 • diversity.uiowa.edu/division/oie

For additional information, refer to *A-Z Search* on the University of Iowa homepage at: uiowa.edu/a-z

Office of the Registrar

319-384-4300 • registrar.uiowa.edu

Office of Student Accountability (OSA)

319-335-1527 • dos.uiowa.edu/accountability

Orientation Services

319-335-1497 • newstudents.uiowa.edu

Parking and Transportation

319-335-1475 • transportation.uiowa.edu

Pomerantz Career Center

319-335-1023 • careers.uiowa.edu

Pride Alliance Center (Pride House)

319-335-7123

multicultural.uiowa.edu/culturalcenters/pridehouse

Recreational Services

319-335-9293 • recserv.uiowa.edu

Student Care and Assistance

319-335-1162 • dos.uiowa.edu/assistance

Student Disability Services (SDS)

319-335-1462 • sds.studentlife.uiowa.edu

Student Health

319-335-8370 • studenthealth.uiowa.edu

Student Legal Services (SLS)

319-335-3276 • studentlegal.uiowa.edu

Student Wellness

319-335-8394 • studentwellness.uiowa.edu

Undergraduate Admissions

319-335-3847 • admissions.uiowa.edu

University Counseling Service (UCS)

319-335-7294 • counseling.uiowa.edu

Women's Resource and Action Center (WRAC)

319-335-1486 • wrac.uiowa.edu

Getting Home and Back

Bus service to and from Iowa City is offered by Burlington Trailways and Greyhound. Airports serving the Iowa City area are: Eastern Iowa Airport (25 miles from campus) and Quad Cities Airport (65 miles from campus).

For more information:

- Burlington Trailways: burlingtontrailways.com
- Greyhound: greyhound.com

Housing and Dining Contacts and Resources

University Housing

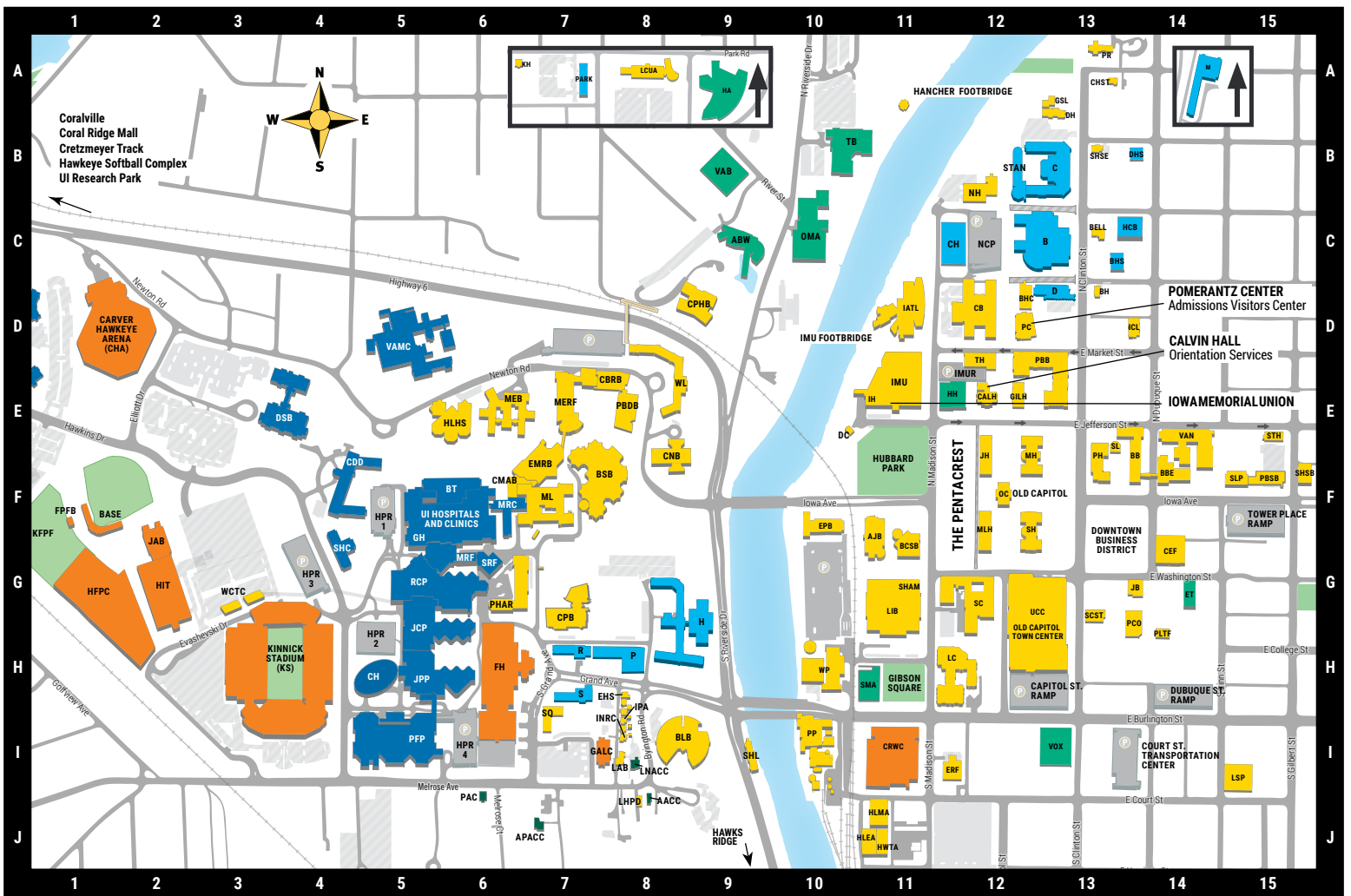
319-335-3000 • housing.uiowa.edu

University Dining

319-335-3000 • dining.uiowa.edu

Off-Campus Housing Service

offcampushousing.uiowa.edu



Residence Halls

- B Burge • C-13
- BHS Bloomington House • C-14
- C Carrier • B-13
- CH Catlett • C-12
- D Daum • D-13
- DHS Dubuque House • B-14
- H Hillcrest • H-9
- HCB Honors Centerstone Building • C-14
- HR Hawks Ridge • J-9
- M Mayflower • A-15
- PARK Parklawn • A-7
- P Petersen • H-8
- R Rienow • H-7
- S Slater • H-7
- STAN Stanley • B-12

General Campus

- AAACC Afro-American Cultural Center • J-8
- AJB Adler Journalism and Mass Communication Building • G-11
- APACC Asian Pacific American Cultural Center • J-6
- BB Biology Building • F-14
- BBE Biology Building East • F-14
- BCSB Becker Communication Studies Building • G-11
- BELL Bedell Entrepreneurship Learning Laboratory • C-13
- BH Bowman House • D-13
- BHC Blank Honors Center • D-12
- BLB Boyd Law Building • I-8
- BSB Bowen Science Building • F-7
- CALH Calvin Hall • E-12

- CB Chemistry Building • D-12
- CBRB Carver Biomedical Research Building • E-7
- CEF Continuing Education Facility • G-14
- CHST 111 Church Street • A-13
- CMAB College of Medicine Administration Building • F-6
- CNB College of Nursing Building • E-8
- CPB College of Pharmacy Building • G-7
- CPHB College of Public Health Building • D-9
- DC Danforth Chapel • E-10
- DH Dey House • B-13
- EHS Environmental Health and Safety • H-8
- EMRB Eckstein Medical Research Building • F-7
- EPB English-Philosophy Building • F-10
- ERF Engineering Research Facility • I-12
- GILH Gilmore Hall • E-12
- GSL Glenn Schaeffer Library • B-13
- HLEA Hydraulics East Annex • J-11
- HLHS Hardin Library for the Health Sciences • E-5
- HLMA Hydraulics Model Annex • J-11
- HWTA Hydraulics Wind Tunnel Annex • J-11
- IATL Iowa Advanced Technology Laboratories • D-11
- ICL Innovation and Collaboration Lab • D-14
- IH Iowa House Hotel • E-11
- IMU Iowa Memorial Union • E-11
- INRC Iowa Nonprofit Resource Center • I-8
- IPA Institute of Public Affairs • I-8
- JB Jefferson Building • G-14
- JH Jessup Hall • E-12
- JH Jefferson Building • G-14
- JH Jessup Hall • E-12
- KH Kuhl House • A-6
- LAB Law Admissions Building • I-8
- LC Lindquist Center • H-12
- LCUA Levitt Center for University Advancement • A-8

- PAC Pride Alliance Center • J-6
- LHPD Law, Health Policy, and Disability Center • J-8
- LIB Main Library • G-11
- LNACC Latino Native American Cultural Center • I-8
- LSP Linn Street Place • I-15
- MEB Medical Education Building • E-6
- MERF Medical Education and Research Facility • E-7
- MH Macbride Hall • F-13
- ML Medical Laboratories • F-7
- MLH MacLean Hall • F-12
- NH North Hall • B-12
- OC Old Capitol • F-12
- PBB Pappajohn Business Building • E-13
- PBDB Pappajohn Biomedical Discovery Building • E-8
- PC Pomerantz Center • D-13
- PCO Plaza Centre One • H-14
- PH Phillips Hall • F-13
- PHAR Pharmacy Building • G-6
- PLTF Public Library Training Facility • H-14
- PP Power Plant • I-10
- PR President's Residence • A-13
- PBSB Psychological and Brain Sciences Building • F-15
- SC Seamans Center for the Engineering Arts and Sciences • H-12
- SCST 118 South Clinton Street • H-13
- SH Schaeffer Hall • F-13
- SHAM Shambaugh Auditorium • H-11
- SHL Stanley Hydraulics Laboratory • I-9
- SHSE Shambaugh House • B-13
- SL Sciences Library • F-13
- SLP Spence Laboratories of Psychology • F-15
- STH Stuit Hall • E-15

- TH Trowbridge Hall • E-12
 - UCC University Capitol Centre • H-13
 - VAN Van Allen Hall • F-14
 - WCTC West Campus Transportation Center • G-3
 - WL Westlawn • E-8
 - WP Water Plant • H-10
- Arts**
- ABW Art Building West • C-9
 - EA Englert Theatre • G-14
 - HT Hancher Auditorium • A-9
 - HH Halsey Hall • E-12
 - OMA Old Museum of Art • C-10
 - SMA Stanley Museum of Art • H-11
 - TB Theatre Building • B-10
 - VAB Visual Arts Building • B-9
 - VOX Voxman School of Music • I-13

Athletics/Recreation

- BASE Duane Banks Baseball Stadium • F-1
- CHA Carver-Hawkeye Arena • D-1
- CRWC Campus Recreation and Wellness Center • I-11
- FH Field House • H-6
- FPFB Football Practice Facility Building • F-1
- GALC Gerdin Athletic Learning Center • I-7
- HIT Hawkeye Indoor Track Facility • G-2
- JAB Jacobson Athletic Building • G-2
- KS Kinnick Stadium • H-3

Health Care

- BT Boyd Tower • F-6
- CDD Center for Disabilities and Development • F-4
- CH Children's Hospital • H-4
- DSB Dental Science Building • E-3
- GH General Hospital • F-5
- JCP John W. Colloton Pavilion • H-5
- JPP John Pappajohn Pavilion • H-5
- MRC Medical Research Center • F-6
- MRF Medical Research Facility • G-6
- PPF Pomerantz Family Pavilion • I-5
- RCP Roy J. Carver Pavilion • G-5
- SHC Wendell Johnson Speech and Hearing Center • G-4
- SRF Shipping and Receiving Facility • G-6
- VAMC Iowa City Veterans Affairs Medical Center • D-5

UI Public Parking

- HPR1 Hospital Parking Ramp 1 • F-5
- HPR2 Hospital Parking Ramp 2 • H-5
- HPR3 Hospital Parking Ramp 3 • G-4
- HPR4 Hospital Parking Ramp 4 • I-6
- IMUR Iowa Memorial Union Parking Ramp • E-12
- NCP North Campus Parking • C-12
- NRP Newton Road Parking • D-7
- City ramps • H-13 • H-14 • I-14 • F-15

VISIT MAPS.UIOWA.EDU FOR ADDITIONAL CAMPUS MAPS

The University of Iowa prohibits discrimination in employment, educational programs, and activities on the basis of race, creed, color, religion, national origin, age, sex, pregnancy, disability, genetic information, status as a U.S. veteran, service in the U.S. military, sexual orientation, gender identity, associational preferences, or any other classification that deprives the person of consideration as an individual. The university also affirms its commitment to providing equal opportunities and equal access to university facilities. For additional information on nondiscrimination policies, contact the Director, The Office of Civil Rights Compliance (OCRC), the University of Iowa, 202 Jessup Hall, Iowa City, IA 52242-1316, 319-335-0705, oie-ui@uiowa.edu.